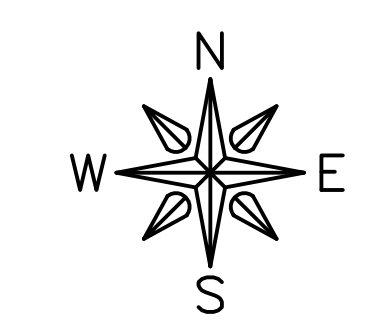
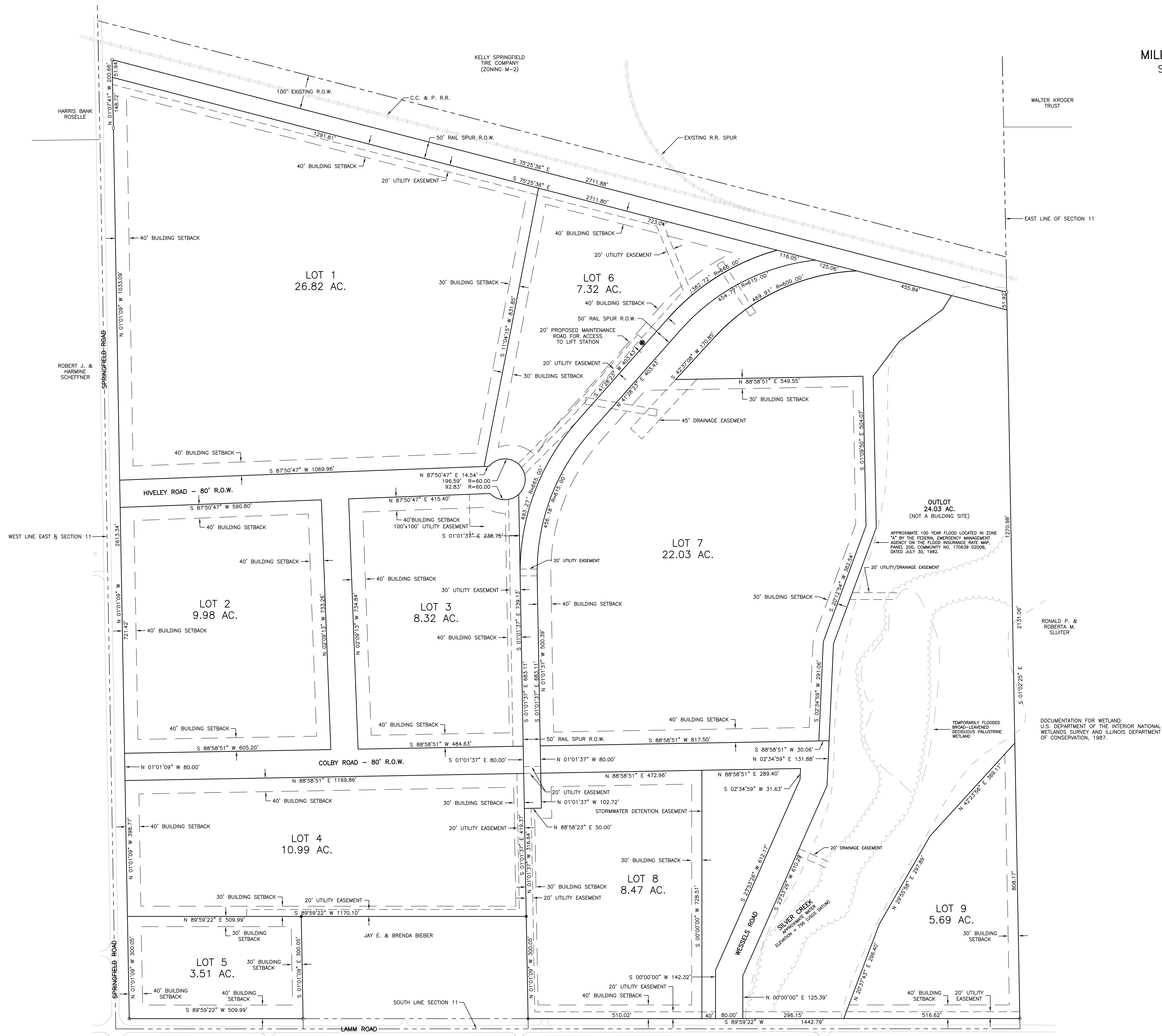


"DRAFT" REPLAT OF  
MILL RACE INDUSTRIAL PARK  
STEPHENSON COUNTY, ILLINOIS  
SEPTEMBER 25, 2006



SCALE: 1" = 100'  
100 0 100 200 300 FEET

**FEHR-GRAHAM & ASSOCIATES, LLC**  
ENGINEERING AND SCIENCE CONSULTANTS  
FREEPORT, IL ROCKFORD, IL ROCHELLE, IL MONROE, WI

OWNER/DEVELOPER:  
FREEPORT AREA ECONOMIC DEVELOPMENT FOUNDATION  
27 WEST STEPHENSON STREET  
FREEPORT, ILLINOIS 61032

PROJECT AND LOCATION:  
STEPHENSON COUNTY ECONOMIC DEVELOPMENT AREA  
MILL RACE INDUSTRIAL PARK

DRAWN BY: B.C.  
APPROVED BY: M.W.G.  
DATE: 09/25/06  
SCALE: 1"=100'

REVISIONS		DATE	DESCRIPTION	BY
1	CITY OF FREEPORT - REVIEW COMMENTS	11/16/06		CHS

DRAWING:  
"DRAFT" REPLAT OF MILL RACE INDUSTRIAL PARK

JOB NUMBER:  
45278  
SHEET NUMBER:  
1 of 1